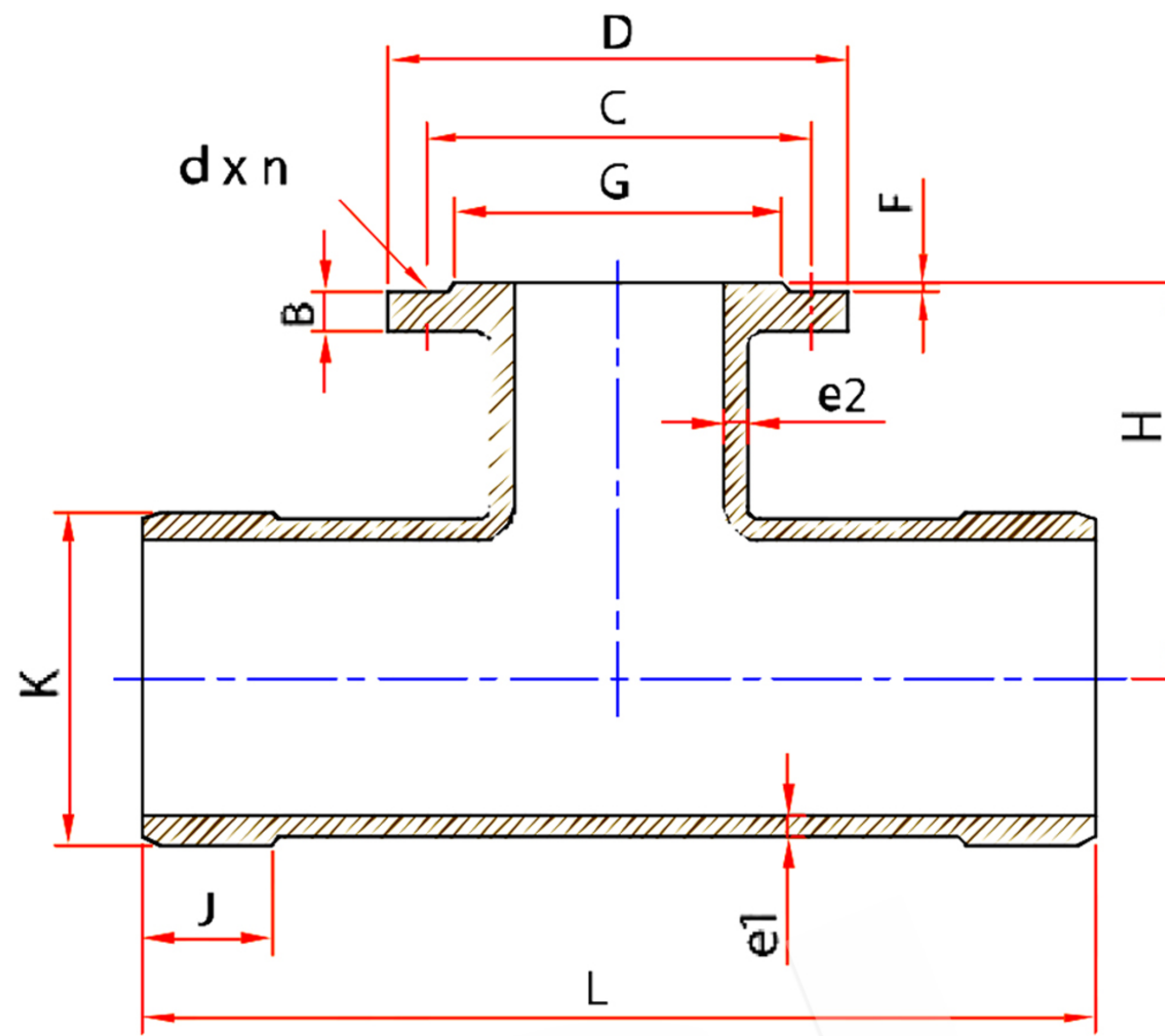


DOUBLE SPIGOT TEES WITH FLANGED BRANCH

TIS. 918-2535

สามทางปลายเรียบ 2 ด้าน หน้าจางกลาง



DN	BODY				DN	BRANCH								
	K	J	e1	L		D	C	G	B	F	d	n	e2	H
80	98	103±2	10	400	80	200	160	133	21	3	19	8	10	190
100	120	103±2	10.5	400	80	200	160	133	21	3	19	8	10.5	190
					100	220	180	156	22	3	19	8	10.5	200
150	176	103±2	11.7	500	80	200	160	133	21	3	19	8	11.7	215
					100	220	180	156	22	3	19	8	11.7	225
					150	285	240	211	23	3	23	8	11.7	250
200	234	103±2	12.8	600	80	200	160	133	21	3	19	8	12.8	240
					100	220	180	156	22	3	19	8	12.8	250
					150	285	240	211	23	3	23	8	12.8	275
					200	340	295	266	23	3	23	8	12.8	300
250	258	103±2	14	700	80	200	160	133	21	3	19	8	13	265
					100	220	180	156	22	3	19	8	13.5	275
					150	285	240	211	23	3	23	8	14	300
					200	340	295	266	23	3	23	8	14	325
					250	395	350	319	25	4	23	12	14	350
300	344	103±2	15.2	800	80	200	160	133	21	3	19	8	13	290
					100	220	180	156	22	3	19	8	13.5	300
					150	285	240	211	23	3	23	8	15	325
					200	340	295	266	23	3	23	8	15.2	350
					250	395	350	319	25	4	23	12	15.2	375
					300	445	400	370	24	4	23	12	15.2	400
400	460	103±2	17.5	900	200	340	295	266	23	3	23	8	16.5	350
					250	395	350	319	25	4	23	12	17.5	350
					300	445	400	370	24	4	23	12	17.5	450
					400	565	515	480	28	4	28	16	17.5	450
500	550	103±2	19.8	1000	250	395	350	319	25	4	23	12	18	400
					300	445	400	370	24	4	23	12	19.5	500
					400	565	515	480	28	4	28	16	19.8	500
					500	670	620	582	33	4	28	20	19.8	500
600	694	103±2	22.2	1100	300	445	400	370	24	4	23	12	19.5	550
					400	565	515	480	28	4	28	16	22.2	550
					500	670	620	582	33	4	28	20	22.2	550
					600	780	620	682	36	5	31	20	22.2	550